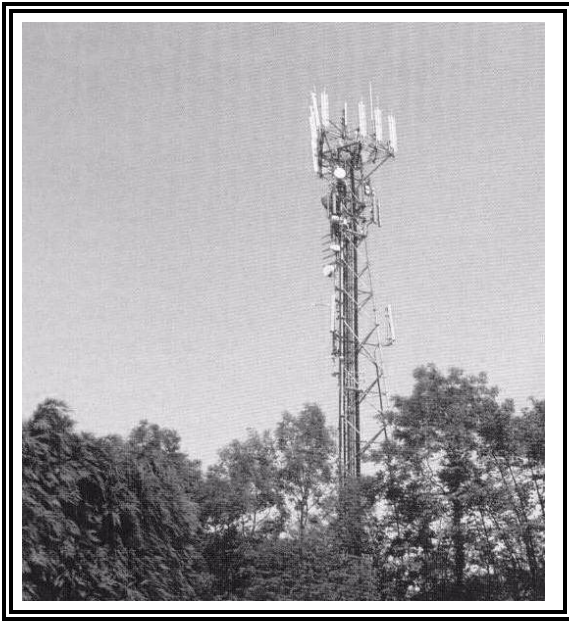


1,000 say No to Green Belt Phone Masts

Orange's plans have gone from this.....(see right)



Recently Hartley has witnessed two separate applications for mobile phone masts on green belt land. At Downs Valley, Orange wanted to put a very intrusive 25m lattice mast tower in the amenity woodland there. The local community put in a phenomenal effort to marshal support against in a very short time, and must have set a record for numbers of objections. They organised a very productive public meeting and were also assisted by the council's masts committee (now sadly disbanded after one meeting). No fewer than 360 people wrote to object, and there was also a 341 signature petition. In July came the good news that Sevenoaks had refused permission on green belt and amenity grounds.

Meanwhile T3 Mobile (formerly One-to-one) had applied for a 15m (50 ft) mast opposite the listed house Brickend in Church Road. Again local people took the initiative and the planning department's postage was bulging with the 230 objections here. It was refused on the same grounds.

Let no-one doubt that the efforts of ordinary people made the difference. Prior to these applications the council had given permission to Orange for a similar mast in West Kingsdown on green belt land. The only difference was there the number of

objectors was far fewer. Unfortunately the ruling group on the parish council subsequently decided to disband the mast committee in spite of its positive achievements.

Alas, the Masts Return

Unfortunately Orange have now applied again for the same site, this time at Downs Valley for a 27m (90 ft) mast in the form of a pine tree in a deciduous woodland. Hopefully the planning department will see that all the reasons for refusal before still apply, but the residents there are going to need your help again .

However plans to install a mast disguised as a fir tree have been thwarted in Lullingstone Lane, Eynesford and more than 100 letters of objection and two petitions from residents over ruled the officers recommendations to grant permission. The land is designated Green Belt and lies just over 100 metres from the boundary of the Conservation area. ***Likewise the mast disguised as a fir tree 16.5m was to be put in a deciduous woodland and the applicants were unaware that a fir tree in an area where trees loose their leaves in the winter would equally stick out like a sore thumb.***

..... to this at Downs Valley?



The Sparrow's Tale

A study published by the government on August 1st 2002 reveals that ten million sparrows have disappeared from Britain over the past 30 years. Research by the British Trust for Ornithology (B.T.O.) shows that the breeding population has shrunk from 24,000,000 to less than 14,000,000. The decline has been most rapid in urban and suburban gardens in London and the South East, although there has been more promising news from northern, western and eastern areas.

No single reason has been blamed for this decline, although cats, additives to unleaded petrol, pesticides and lack of nesting sites have all been suggested by Dr. Humphrey Crick, chief editor of the B.T.O. report, as possible causes while less food is available in the countryside due to more efficient farming practices, a suggestion has been made that urban birds might prefer more traditional nourishment such as stale breadcrumbs to modern bird seed.

A major study of house sparrows is being carried out by the Biodiversity Partnership which includes the London Wildlife Trust and the London Natural History Society. Results will be published in the autumn. Meanwhile sparrows can be encouraged in gardens and on allotments by the provision of nest boxes and bird tables and the avoidance of pesticides.

The study also shows that the number of starlings has fallen from about twenty million to eight and a half million over the same period of thirty years, although their breeding patterns have recently shown some improvement.

A Helping Hand for Butterflies

Research shows that more than half our native species are declining by an average of 14% a year. Dr. David Bellamy suggests we can help to reverse the trend by encouraging butterflies to visit our gardens in the following ways:

1. By growing plants through out the year which will benefit most species
 - a) In spring aubretias, heathers, heaths and yellow alyssum to provide nectar for butterflies emerging from hibernation.
 - b) In summer violets, African marigolds, honeysuckle, lavender, sweet peas and of course buddleias (also known as butterfly bushes.
 - c) In autumn Michaelmas daisies, hebes, sedum (ice plants). Rotting fruit will also provide food for butterflies preparing to hibernate.

d) In winter ivy will supply nectar when little else is to be found.

2. Make sure your plants are pesticide free and don't forget to leave a nettle patch for the caterpillars of small tortoiseshells, peacocks, red admirals & commas.

3. Clear the coolest part in your garden shed of cobwebs and spiders to shelter over wintering butterflies. Be sure to use insect friendly preservatives on fences and sheds.

Slugs and Snails

In this and our last issue we highlighted the decline in our bird populations. This year there has been no shortage of slugs and snails and many gardeners in their desperation to save their crops and flowers have reached for the slug pellets. Many people suspect that the use of slug pellets has contributed to the decline of wildlife. At the moment there is no concrete evidence to support this but a scientific study is being carried out at the moment to prove one way or the other as to whether slug pellets are poisoning our bird life. The results should be available in a couple of year's time.

In the mean time there are many ways of attempting to control slugs including the use of coffee or bran. The caffeine present in coffee affects their nervous system. Although slug pellets based on aluminium sulphate are not strictly organic they are environmentally friendly. They kill slugs and snails on contact with minimum risk to other wild life or pets. Commercially available products using aluminium sulphate as the active ingredient include Growing Success and Fertosan. If you find dead birds in the garden and suspect that they have been poisoned by slug pellets you can report the incident to the

Poison Help line telephone: 0800 321 600.

Memorial to John Sandeford

We are pleased to report that John Sandeford's work will be recognised in the form of a plaque by the pedestrian crossing and has been approved by Mrs Sandeford. Thanks for this project must go to Helen Smith, who has written letters, obtained permission to erect the plaque on a private wall. Helen worked closely with John Sandeford to instigate the pedestrian crossing. The plaque has the approval of Mrs Sandeford and will be donated and erected by the generosity of Peter Gay, stonemasons, of Longfield.

Help for the over 60's and disabled

As well as bus passes, other help is available:

- Moat Care and Repair run a handyman service for minor repairs for home owners and tenants, who are over 60 or disabled. Those on benefit only pay for materials, others pay £5 per hour in addition. For details phone Moat during office hours on 01732 746835.
- Help the Aged offer a "Handy Van" scheme for older people on low incomes. They aim to make homes safe and secure. More details on **01255 473999**

Emergency Phone Numbers

It is difficult in an emergency to know who to call and when. If a **suspicious incident** occurs always report it to the Police, even if it does mean a wait on the end of the phone.

For **URGENT CASES** dial **999** immediately
For **CONFIDENTIAL INFORMATION** use
Crime Stoppers on **0800 555111**
Otherwise call **North Kent**
police direct on **01474 331055**
(Gravesend)
or leave a message on **01474 565008** (Meopham)

Please support our Hartley Post Office

We must congratulate The Post Master at Hartley for helping the residents of Fawkham in their hour of need. When the word came through that Fawkham Post Office was to close fairly promptly the residents were naturally concerned. After several meetings and negotiations, the Hartley Post Master agreed to help run the new post office to be held in Fawkham Village Hall on Monday, Tuesday and Wednesday. The drawing of pensions and allowances will be continued, saving Fawkham villagers from having to travel out of their village. This valuable service has helped all those drawing allowances.

The advantages of having a Post Office in Hartley are:

- Special delivery U.K. and International; next day deliveries; recorded deliveries

- Pensions and allowances (starting April 2003 these will be paid directly into bank accounts this service will still be available with much more security than before)
- Personal banking (cheque deposits, cash deposits and cheque encashments) with banking partners Alliance and Leicester, Barclays, Cahoot, Lloyds TSB, Smile.co.uk and Co-op. Universal Banks will be here soon)
- Posting larger items that do not fit post boxes.
- Proof of posting certificates
- Postal Orders; Foreign Currency; Travellers Cheques; Travel Insurance; E111 Health Form.
- National Savings; Premium and Childrens' Bonds; Savings Certificates; National Savings ISA
- Cheap International phone calls with our Post Office phone card,
- Mail redirection Service
- Bill payment gas, electricity, water, T.V. licence, Insurance, store cards, Council, Housing Association rents, Council Tax, Income Tax, Catalogues, Mobile phone top-ups, Homecare Schemes
- Fishing Licences; Philatelic items etc.

We would urge you all to make the most use of our Post Office as you can.

New Web site for Hartley

Unlike many parishes, Hartley does not appear to have its own village website. So the Friends of Hartley Countryside have launched a new website for the village of Hartley:

hartley-kent.org.uk

We have included sections on subjects as diverse as history, parish council minutes, local business directory and churches etc.

If you have any suggestions for improvements or if you have anything you want included, do please let us know. You can contact the webmaster at mail@hartley-kent.org.uk.

No Airport@Cliffe

As everyone is aware the government has proposed a new airport to be built at Cliffe to handle 110 million passengers by 2030. This will obliterate the village of All Hallows including its Grade I listed church, as well as do irreparable damage to the internationally designated wildlife area.

The government says that the number of journeys annually will treble to 500 million by 2030, although they admit this is a guess, and that south-east airports need a capacity for 300 million passengers. They threaten that if airport expansion is not allowed fares will rise by £100 and people will have to travel elsewhere to catch planes.

Different options offered include building new runways at Heathrow and Stansted, as an alternative to Cliffe. They say that an airport at Cliffe will help regenerate the Thameside area, provide jobs, that fewer people will be affected by the noise and land and transport links are available. Against Cliffe they say that it carries greater financial risk than expanding an existing airport and there may be risks of birds hitting planes.

The FHC is very unhappy at these proposals. This is most ecologically damaging of all the options. Some assumptions are very questionable, for example they assume a big reduction in aircraft noise - very convenient when this takes the whole of the Medway Towns out of the noise affected area. They say the airport would create much needed jobs, but then say they will have to spend hundreds of millions on a road tunnel to Essex because there won't be enough local people to work there! This would be a Trojan horse for massive development

We urge our Parish and District Councils to oppose this development. **In our opinion this can only be bad for Kent.**

You have until 30 November to make your views known. To get a copy of the report, telephone the **Department of Transport** on **0845 100 5554**. or **0870 830 8011**

For full details see our Web site
www.hartley-kent.org.uk

Let your MP know what you think:
**Dr Howard Stoute, House of Commons,
London SW1A 0AA**

Pressure Hartley Parish Council to back the
NoAirport@Cliffe campaign by writing to:
Hartley Parish Council

The Library
Ash Road,
Hartley

Get a **No Airport @Cliffe** t-shirt from the Kent
Wildlife Trust at Tyland Barn, Maidstone.

Friends Raise over £800 for local community

In our last newsletter we advertised a talk to be given by Kent Underground on Dene Holes. We were absolutely delighted with the response and would like to thank everybody who came for his or her support. As a result we were able to give a cheque for £112 to the local Fawkham and Hartley Archaeological Group.

You may have seen us again at the Village Fete where we tried to add to the fun by running a straw bale-throwing competition raising £30 and £80 for Name the Hartley Bear competition for Age Concern.

Later on in the summer we ran a Quiz Night, which was thoroughly enjoyed by all those who participated. May we once again thank all those who came to support this event. Thanks to their generosity we were able to present the village fete charity Age Concern with a sum of £342 on August 2nd

We also raised £340 in June for Ash-cum-Ridley Jubilee 2002 event, contributing to local Youth Charities.

**Come to our
Cheese and Wine Evening
W.I. Hall, Ash Road, Hartley,
8.00 p.m.**

Friday 6th December 2002

Admission by ticket only

Tickets £4.00

**Profits will be donated to Guide Dogs
for the Blind.**

**Contact Peter or Mrs Mayer on
01474 703289**